



Unique Transport Products LLC



*UTP GENERAC / KOHLER
GENERATOR LIFT
CART®*

USER AND OWNER MANUAL



Table of Contents:

Section Number:

- 1) Assembly
- 2) Using the UTP Generac / Kohler Lift Cart
- 3) UTP Generac / Kohler Lift Cart Limited Warranty
- 4) Disclaimer, Limitation of Liability and Indemnification



1) SECTION 1 – ASSEMBLY



The UTP Generac / Kohler Lift Cart comes shipped with the following pieces:

- 1-Handle
- 2-Wheel assemblies
- 1-Crossbar with 4 holes and pins
- 3-straps (yellow and 2 blue)
- 1-Crossbar with 2 holes (Kohler)



Slide the left and right wheel assembly into the handle assembly. Slide the assemblies all the way into the handle. Tighten knobs for a rigid connection.



Your final assembled UTP Generac / Kohler Lift Cart is now ready for use.

See section 2 for using the UTP Generac / Kohler Lift Cart.



**2A) SECTION 2 – USING THE UTP GENERAC / KOHLER LIFT
CART FOR KOHLER (8kW, 10kW, 12kW) AND GENERAC
(8kW-20kW)**



Straddle UTP Generac / Kohler Lift Cart over generator as shown.



Insert crossbar into middle (Kohler) generator shipping holes. Install cotter pins to secure bar.

Insert crossbar into front (Generac) generator shipping holes. Install cotter pins to secure bar.



Once the front lift bar is securely in place, insert yellow strap in the two rear shipping holes of the generator.

Install one end of the blue strap to the yellow strap and the other end to the hook at the bottom of the handle.





Push down on handle and pull down on blue harness strap at the same time. **The lower you push the handle down while pulling down on the blue strap, the higher the generator clearance off the ground.**

If you have any questions how this works, please review our infomercial on the UTP website or call us toll free at 877-421-0203



The generator is now ready to be moved and positioned over the prepared generator pad. Site conditions warrant the use of the UTP Generac / Kohler Lift Cart.

Please use extreme caution when moving generator.



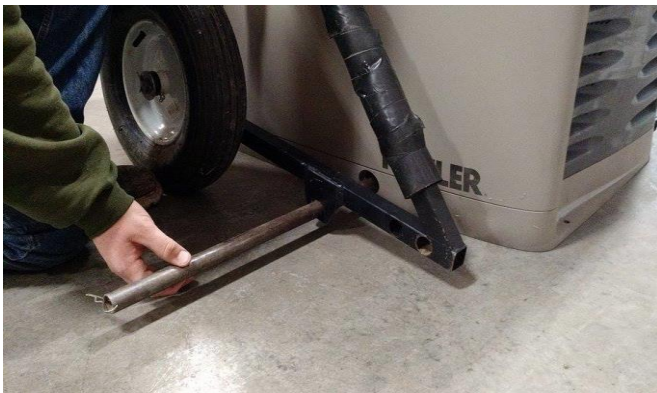
Center the generator over stone pad. **While keeping down pressure on the handle, let tension out of blue harness. Please use caution when letting tension out of strap.** Remove hooks at rear of generator. Remove front lift pin and pull UTP Generac / Kohler Lift Cart away. Generator should be ready for electrical and mechanical installation.



**2B) USING THE UTP GENERAC / KOHLER LIFT CART
FOR KOHLER (14kW, 20kW)**



Straddle UTP Generac / Kohler Lift Cart over generator as shown.



Insert crossbar into front generator shipping holes. Install cotter pins to secure bar.



Insert second crossbar into back of generator shipping holes. This crossbar should have only two holes on top to allow straps to be connected.





Once the front and back lift bar is securely in place, insert blue straps into each hole of back bar. Then run each strap to handle and hook into side holes.



Push down on handle and pull down on blue harness straps. **The lower you push the handle down while pulling down on the blue strap, the higher the generator clearance off the ground.**

If you have any questions how this works, please review our infomercial on the UTP website or call us toll free at 877-421-0203

The generator is now ready to be moved and positioned over the prepared generator pad. Site conditions warrant the use of the UTP Generac / Kohler Lift Cart.

Please use extreme caution when moving generator.

Center the generator over stone pad. **While keeping down pressure on the handle, let tension out of blue harness. Please use caution when letting tension out of strap.** Remove hooks at rear of generator. Remove front lift pin and pull UTP Generac / Kohler Lift Cart away. Generator should be ready for electrical and mechanical installation.



Section 3 –UTP Generac / Kohler Generator Lift Cart Limited Warranty

Unique Transport Products LLC warrants the UTP Generac / Kohler Generator Lift Cart against defective components or workmanship for 1 year. Wheels and harness assembly warranted for 90 days. Warranty does not cover lift cart abuse, exposure to weather or general ill-treatment of cart other than what it was designed for.

The UTP Generac / Kohler Generator Lift Cart is designed to lift and move Generac and Kohler style air cooled home standby generators weighing up to 600 lbs.



4) Disclaimer, Limitation of Liability and Indemnification

Trademarks

The term "UTP Generac / Kohler Generator Lift Cart" and "Unique Transport Products LLC" are trademarks, and UTP Generac / Kohler Generator Lift Cart logos and all related product and service names, designs, and slogans are the trademarks or service marks of Home Power Systems LLC. All other product and service marks on the Unique Transport Products web site are the trademarks of their respective owners.

Disclaimer, Limitation of Liability and Indemnification

You agree to indemnify and hold harmless UNIQUE TRANSPORT PRODUCTS (UTP) and HOME POWER SYSTEMS LLC, its affiliates, agents, third-party information providers, merchants, licensors and others involved in the delivery of the UTP GENERAC / KOHLER GENERATOR LIFT CART or the delivery of products, services or information over the UNIQUE TRANSPORT PRODUCTS web site, and their respective officers, employees and directors, from and against any and all liabilities, expenses, damages, and costs including reasonable attorney's fees, resulting from the use of the UTP GENERAC / KOHLER GENERATOR LIFT CART. The UTP GENERAC / KOHLER GENERATOR LIFT CART is to be used only for the moving of Briggs and Stratton, GE, and Milbank style, air cooled home standby generators weighing less than 600lbs. Any other use of the UTP GENERAC / KOHLER GENERATOR LIFT CART will void any warranty implied. Extreme caution is required when moving generators. UNIQUE TRANSPORT PRODUCTS is not liable for any injuries that may occur when assembling, moving generators or disassembling the UTP GENERAC / KOHLER GENERATOR LIFT CART. UNIQUE TRANSPORT PRODUCTS is not liable for damage that may occur to the generator when using the UTP GENERAC / KOHLER GENERATOR LIFT CART. UNIQUE TRANSPORT PRODUCTS is not liable for yard, lawn or landscape damage that may occur when using the UTP GENERAC / KOHLER GENERATOR LIFT CART.

Contact

Please contact us at **Unique Transport Products, 1-877-421-0203** or e-mail to www.uniquetransportproducts.com if you become aware of any content that you believe to be in violation of these Terms of Services including without limitation, claims that any content on the Unique Transport Products infringes the copyright of a third party.

